



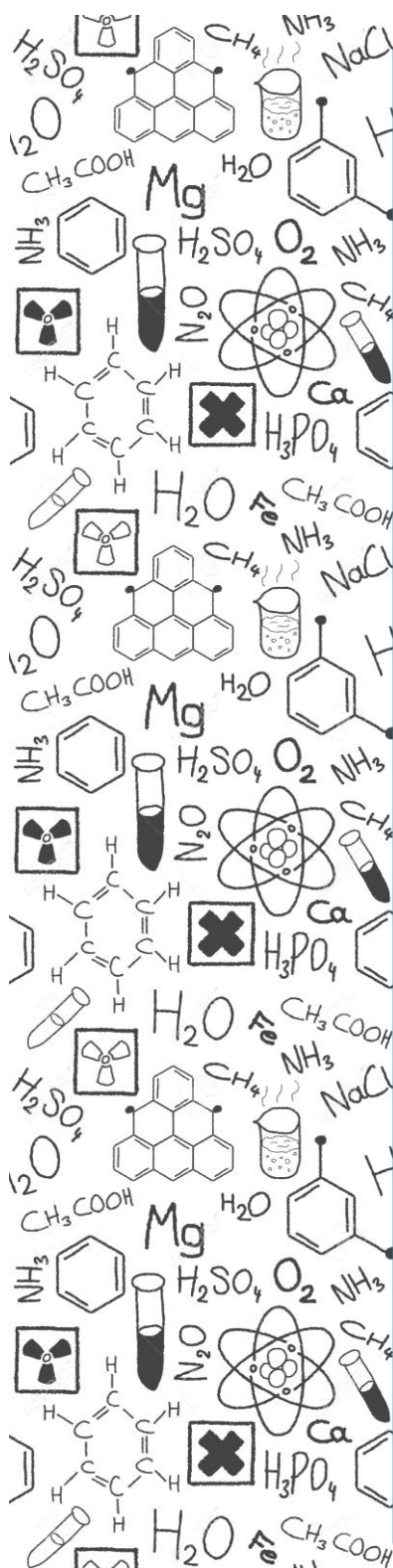
Sample Preparation Products Catalog



*Manufacturer of Quechers Kits, SPE
Columns and Sorbent Chemicals*

Mahmudiye M. No:27/34 Akdeniz - Mersin - Turkiye
+90850 3034076 / global@labsert.com / www.labsert.com

ABOUT KCHROM



KChrom is a registered trademark of Labsert Laboratory Services and Technologies Ltd and division of Labsert group companies. We are international manufacturer and seller of Quechers kits, SPE cartridges, sample preparation bulk chemicals and laboratory equipments. Our company is ISO 9001 registered and ISO 17034 certified.

Labsert started its operations in 2015 to manufacture of certified reference standard materials, analytical reagents and volumetric solutions. From the second quarter of 2018, manufacturing of Quechers Kits, SPE products and bulk chemicals has been carried out according to international classifications and scopes. Physical and chemical specifications of products are certified and supplied to the market. Today, over 100 different sample preparation products are manufactured. Sources allocated for both production quality and research-development activities are increased by annual revisions.

Specialists of basic sciences, engineering, finance and foreign trade as well as professionals having significant experience in quality management, instrumental analysis and laboratory processes take part within the organization of KChrom. The process from manufacture to shipment is carried out in conformity with international quality system and standards.

Advantages of KChrom Products

- Pre-Tested Leak Proof Tubes
- Extra Dried Salts
- High-Purity Phase Chemicals
- Disposable Salt Transfer Tubes
- Competitive Prices

Quality Assurance

- ✓ ISO 9001 Registered
- ✓ ISO 17034 Certified



CONTENTS

QUECHERS KITS

Quechers Kits and Products	4
<i>Extraction Kits</i>	5
<i>Cleanup Kits</i>	6
<i>Custom-Made Preparations</i>	8

SPE COLUMNS

SPE Columns and Cartridges	9
Normal Phase Columns	10
Reversed Phase Columns	11
Polymeric Phase Phase Columns	11
Ion Exchange Phase Columns	12

SORBENT CHEMICALS

Bulk Chemicals	14
Spare Parts	15

QUECHERS KITS



Extraction Kits

Extraction Kits



KChrom extraction salts and buffers are prepackaged in anhydrous packages. Extraction kits include: 50 polypropylene centrifuge tubes (50 mL) with leak-proof caps, MgSO₄, NaCl, or other salts in disposable salt transfer tubes for buffering.

These pre-weighed free-flowing salts (pure and dry) in slim packs to make extraction a snap and dispersive SPE mixtures with high-purity phase chemicals. Extraction kits supports AOAC 2007.01 and EN 15562 methodologies.

[QuEChERS Extraction Kits](#)

P/N: QEK-001	P/N: QEK-002	P/N: QEK-003
Method: AOAC 2007.01	Method: EN 15562	Method: Original Unbuffered
- 6g MgSO ₄	- 4g MgSO ₄ + 1g NaCl	- 6g MgSO ₄
- 1.5g Sodium Acetate	- 1g TSCD + 0.5g DHS	- 1.5g NaCl
Pack: 50 Salt Pouches + 50ml Tubes	Pack: 50 Salt Pouches + 50ml Tubes	Pack: 50 Salt Pouches + 50ml Tubes

P/N: QEK-004
Method: Original Unbuffered
- 4g MgSO ₄
- 1g NaCl
Pack: 50 Salt Pouches + 50ml Tubes

Cleanup Kits

Cleanup Kits



KChrom clean-up kits are prepackaged in anhydrous packages. Clean up kits include: 50 polypropylene centrifuge tubes (15 mL) or 100 polypropylene centrifuge tubes (2 mL) with leak-proof caps. Salts are high-purity phase chemicals (MgSO₄, PSA, C18, GCB) which are pre-weighed free-flowing in disposable transfer tubes. Clean-up kits supports AOAC 2007.01 and EN 15562 methodologies. These kits make sample preparation quick and easy for multi-residue analysis by instrumental analysis.

QuEChERS Cleanup Kits for AOAC 2007.01

P/N: QCK-AC-001	P/N: QCK-AC-002	P/N: QCK-AC-003
- 150mg MgSO ₄ - 50mg PSA Pack: 2 ml x 100 Tubes / Box	- 1200mg MgSO ₄ - 400mg PSA Pack: 15 ml x 50 Tubes / Box	- 150mg MgSO ₄ - 50mg PSA - 50mg C18 Pack: 2 ml x 100 Tubes / Box

P/N: QCK-AC-004	P/N: QCK-AC-005	P/N: QCK-AC-006
- 1200mg MgSO ₄ - 400mg PSA - 400mg C18 Pack: 15 ml x 50 Tubes / Box	- 150mg MgSO ₄ - 50mg PSA - 50mg GCB Pack: 2 ml x 100 Tubes / Box	- 1200mg MgSO ₄ - 400mg PSA - 400mg GCB Pack: 15 ml x 50 Tubes / Box

P/N: QEK-007	P/N: QCK-AC-008	P/N: QCK-AC-009
- 150mg MgSO ₄ - 50mg PSA - 50mg GCB + 50mg C18 Pack: 2 ml x 100 Tubes / Box	- 1200mg MgSO ₄ - 400mg PSA - 400mg GCB + 400mg C18 Pack: 15 ml x 50 Tubes / Box	- 150mg MgSO ₄ - 25mg C18 Pack: 2 ml x 100 Tubes / Box

P/N: QEK-010	P/N: QCK-AC-011	P/N: QCK-AC-012
- 900mg MgSO ₄ - 150mg C18 Pack: 15 ml x 50 Tubes / Box	- 150mg MgSO ₄ - 50mg PSA - 7.5mg GCB + 50mg C18 Pack: 2 ml x 100 Tubes / Box	- 1200mg MgSO ₄ - 400mg PSA - 45mg GCB + 400mg C18 Pack: 15 ml x 50 Tubes / Box

Cleanup Kits

Cleanup Kits

QuEChERS Cleanup Kits for EN 15562

P/N: QCK-EN-001	P/N: QCK-EN-002	P/N: QCK-EN-003
- 150mg MgSO ₄ - 25mg PSA Pack: 2 ml x 100 Tubes / Box	- 900mg MgSO ₄ - 150mg PSA Pack: 15 ml x 50 Tubes / Box	- 150mg MgSO ₄ - 25mg PSA - 25mg C18 Pack: 2 ml x 100 Tubes / Box

P/N: QCK-EN-004	P/N: QCK-EN-005	P/N: QCK-EN-006
- 900mg MgSO ₄ - 150mg PSA - 150mg C18 Pack: 15 ml x 50 Tubes / Box	- 150mg MgSO ₄ - 25mg PSA - 2.5mg GCB Pack: 2 ml x 100 Tubes / Box	- 900mg MgSO ₄ - 150mg PSA - 15mg GCB Pack: 15 ml x 50 Tubes / Box

P/N: QCK-EN-007	P/N: QCK-EN-008
- 150mg MgSO ₄ - 25mg PSA - 7.5mg GCB Pack: 2 ml x 100 Tubes / Box	- 900mg MgSO ₄ - 150mg PSA - 45mg GCB Pack: 15 ml x 50 Tubes / Box



KCHROM[®]
QUECHERS-KITS
Repeatable Accuracy

Custom-Made Kits

Custom-Made Kits



MANUFACTURING OF CUSTOM-MADE PRODUCTS

KChrom attaches particular importance to custom standards. Many custom-made products are developed and manufactured by experienced staffs of KChrom. As an innovative manufacturer of custom standards and high purity chemicals, lots of special products have been produced for laboratories and institutes around the world. Custom-Made is not only issue about chemicals, mixtures or weights, it is also about packaging. We also provide you custom-made packaging for our kits and chemicals.

➤ WHAT WE OFFER

- ✓ All custom products are prepared by strictly following customer's requirements
- ✓ Custom standards are manufactured within competitive lead time
- ✓ Custom products are delivered after necessary tests and controls as stock products.
- ✓ Customs are for laboratory use and production process.

➤ HOW TO GET CUSTOM-MADE QUOTATION

To order customized standards, you can e-mail us directly. Just specify the parameters, mixtures, weight, packaging volume and quantity in your e-mail or attached document. Do not worry about the informations in your e-mails whether they are sufficient or not because we contact you if we need further informations to prepare your quotation. Compatibility and stability of your request is verified by authorized staff and we provide you with a quote within 1-3 business day.

SPE COLUMNS AND CARTRIDGES



SPE Columns

SPE Columns



Solid-phase extraction (SPE) is a sample preparation technique routinely used in analytical laboratories for the extraction of analytes from a complex matrix. KChrom solid phase extraction (SPE) tubes are offered with extra pure and clean sorbents and high-purity materials to minimize background and help eliminate unwanted interference. KChrom has also advantage in packaging of tubes; Each box contains sealed foil bags of tubes to improve shelf life and keep unused sorbents dry and fresh.

NORMAL PHASE

Silica Column

KChrom SPE Silica columns are packed with high-purity grade powder form silica with large specific surface area, PE frit (20 µm porosity) and certified particle size.

Specifications:

Base material: High-Purity Silica
Form: Powder
Particle size: 50 µm
Pore size: 70 Å
Surface area: 480 m²/g
Functional group: Unmodified

NORMAL PHASE

Amino Column

KChrom SPE Amino column is based on silica gel functionalized with amino groups. The product (3-Aminopropyl-functionalized silica gel) is 9% functionalized and has 1mmol/g of NH₂ loading (extent of labelling). It is suitable as stationary phase both for normal phase and ion exchange mode.

Specifications:

Base material: High-Purity Silica
Form: Powder
Particle size: 50 µm
Pore size: 100 Å
Surface area: 200 m²/g
Carbon content: 4.5 %
Functional group: Aminopropyl

NORMAL PHASE

Cyano-Propyl Column

KKChrom SPE cyano-propyl column is based on silica gel functionalized with cyano groups. The product is cyanopropyl bonded silica sorbent, weakly hydrophobic, used as normal phase or reversed phase. CN sorbent will be a better choice to extract strongly hydrophobic compounds which may bind to C18 sorbent irreversibly.

Specifications:

Base material: High-Purity Silica
Form: Powder
Particle size: 50 µm
Pore size: 100 Å
Surface area: 280 m²/g
Carbon content: 5.8 %
Functional group: 2-Cyano

NORMAL PHASE

Florisil Column

KChrom SPE florisil column is a commercially-prepared magnesia silica gel. Florisil is a highly selective sorbent that has extensive utility in preparative and analytical chromatography. It is a selective sorbent comprised of synthetic magnesium-silica gel activated at 675 °C.

Legal Information: Florisil is a registered trademark of U.S. Silica Company.

Specifications:

Base material: Florisil
Form: Powder
Particle size: 150 - 250 mesh
Functional group: Magnesia silica gel

SPE Columns

SPE Columns

REVERSED PHASE

C8 Column

KChrom SPE C8 columns are packed with high-purity grade Silica gel base material (irregularly shaped) with large specific surface area with certified particle size. Column material is monomerically bonded, octyl (9 %C).

Specifications:

Base material: High-Purity Silica
Form: Powder
Particle size: 50 μm
Pore size: 100 \AA
Surface area: 280 m²/g
Functional group: C8 (octyl) bonding

REVERSED PHASE

C18 Column

KChrom SPE C18 columns are packed with high-purity grade Silica gel base material (irregularly shaped) with large specific surface area with certified particle size. Column material is Polymerically bonded, octadecyl (~18 %C).

Specifications:

Base material: High-Purity Silica
Form: Powder
Particle size: 50 μm
Pore size: 70 \AA
Surface area: > 400 m²/g
Functional group: C18 (octadecyl) bonding

POLYMERIC PHASE

MAX Column

KChrom MAX sorbent is composed of monodisperse polystyrene-divinylbenzene resin particles grafted with aromatic quaternary ammonium groups. This polymeric mixed-mode sorbent features reversed-phase and strong anion exchange retention mechanisms, allowing for superb retention for acidic compounds.

Specifications:

Particle size: 40 μm
Pore size: 60 \AA
Surface area: 600 m²/g.

POLYMERIC PHASE

WAX Column

KChrom WAX sorbent is composed of monodisperse microporous polystyrene-divinylbenzene resin particles grafted with amine functional groups. This polymeric mixed-mode sorbent features reversed-phase and weak anion exchange retention mechanisms, allowing for superb retention for strong acids.

Specifications:

Particle size: 40 μm
Pore size: 300 \AA
Surface area: 600 m²/g



KCHROM[®]
SPE PRODUCTS
Discover The Quality

POLYMERIC PHASE

WCX Column

KChrom SPE WCX columns are composed of monodisperse microporous polystyrene-divinylbenzene resin particles grafted with carboxyl groups. Column material is stable from pH 1 to 14, compatible with common solvents

Specifications:

Particle size: 40 μm
Pore size: 300 \AA
Surface area: 600 m^2/g

ION EXCHANGE PHASE

SCX Column

KChrom SPE SCX columns are packed with high-purity grade Silica gel base material (irregularly shaped) with 0.8 meq/g ion exchange capacity. Column material is a polymerically bonded, benzene sulfonic acid functional group.

Specifications:

Base material: High-Purity Silica
Form: Powder
Particle size: 50 μm
Pore size: 70 \AA
Surface area: 510 m^2/g
Functional group: Sulfonic acid bonding

ION EXCHANGE PHASE

PSA Column

KChrom SPE PSA columns are packed with high-purity grade Silica gel base material (irregularly shaped) with 0.98-1.05 meq/g capacity. Column material is a polymerically bonded ethylenediamine-N-propyl phase.

Specifications:

Base material: High-Purity Silica
Form: Powder
Particle size: 50 μm
Pore size: 70 \AA
Surface area: > 500 m^2/g
Functional group: Ethylenediamine-N-propyl bonding

ION EXCHANGE PHASE

SAX Column

KChrom SPE SAX columns are packed with high-purity grade Silica gel base material (irregularly shaped) with 0.14 meq/g ion exchange capacity. Column material is a polymerically bonded quarternary amine.

Specifications:

Base material: High-Purity Silica
Form: Powder
Particle size: 50 μm
Pore size: 70 \AA
Surface area: 510 m^2/g
Functional group: Ammonium ion, quaternary bonding

SORBENT CHEMICALS



PSA (Primary-Secondary Amine)

Particle size: 50 μm
Pore size: 70 \AA
Surface area: 500 m^2/g

Magnesium Sulfate (MgSO_4)

Anhydrous
Extra Dried
Purity: $\geq 97\%$

Sodium Acetate (NaOAc)

Anhydrous
Loss on drying (120 $^\circ\text{C}$): $\leq 1.0\%$
Purity: $\geq 99\%$

C18 sorbent Phase

Octadecyl bonding
~18% C Loading
Average pore size = 60 \AA
Surface area = 475 m^2/g

Sodium Chloride (NaCl)

Anhydrous
Moisture: $\leq 0.05\%$
Purity: $\geq 99\%$
pH (10%, H_2O 20 $^\circ\text{C}$) = 7 - 7.5

Sodium hydrogencitrate sesquihydrate

Appearance: Powder
Molecular Weight: 263.11 g/mol
Color: White
Purity: $\geq 98.5\%$

Tri-Sodium citrate dihydrate




Assay: 99.0 - 100.5 %
Molecular Weight: 294.10 g/mol
Identity: passes test
Appearance of solution: passes test
pH-value (5 %; water, 25 $^\circ\text{C}$): 7.5 - 9

Graphitized carbon black - (GCB)

Surface area: 100-250 m^2/g
Particle size: 100-300 mesh



KCHROM[®]
BULK CHEMICALS
Purity and Quality

Syringe Filters					SPE Frits (Membrane Filter)				
									
Product No	Diameter	Pore Size	Material	Pack	Product No	Diameter	Pore Size	Material	Pack
SF-S-001	0.22 um	25 mm	Nylon	100 / Sterile	SM-S-001	20 um	PE	1 ml	200 / Box
SF-S-001	0.22 um	25 mm	Nylon	100 / Sterile	SM-S-003	20 um	PE	3 ml	100 / Box
SF-S-001	0.22 um	25 mm	Nylon	100 / Sterile	SM-S-006	20 um	PE	6 ml	50 / Box
SF-S-001	0.22 um	25 mm	Nylon	100 / Sterile	SM-S-012	20 um	PE	12 ml	30 / Box
SF-S-001	0.22 um	25 mm	Nylon	100 / Sterile	SM-S-020	20 um	PE	20 ml	30 / Box
SF-S-001	0.22 um	25 mm	Nylon	100 / Sterile	SM-S-060	20 um	PE	60 ml	25 / Box
SF-S-001	0.22 um	25 mm	Nylon	100 / Sterile					
Empty SPE Columns									
									
Product No	Volume	Frits	Pack	Product No	Volume	Frits	Pack		
SC-E-01	1 ml	None	100 / Box	SC-E-12	12 ml	None	20 / Box		
SC-F-01	1 ml	Yes	100 / Box	SC-F-12	12 ml	Yes	20 / Box		
SC-PF-01	1 ml	Pre-Fritted	100 / Box	SC-PF-12	12 ml	Pre-Fritted	100 / Box		
SC-E-03	3 ml	None	50 / Box	SC-E-16	20 ml	None	20 / Box		
SC-F-03	3 ml	Yes	50 / Box	SC-F-16	20 ml	Yes	20 / Box		
SC-PF-03	3 ml	Pre-Fritted	100 / Box	SC-PF-16	20 ml	Pre-Fritted	20 / Box		
SC-E-06	6 ml	None	30 / Box	SC-E-20	60 ml	None	16 / Box		
SC-F-06	6 ml	Yes	30 / Box	SC-F-20	60 ml	Yes	16 / Box		
SC-PF-06	6 ml	Pre-Fritted	100 / Box	SC-PF-20	60 ml	Pre-Fritted	16 / Box		

The logo features a white letter 'K' inside an orange circle, followed by the word 'Chrom' in a blue, sans-serif font with a registered trademark symbol (®) to its upper right.

A part of **Labsert**

*Manufacturer of Quechers Kits, SPE
Columns and Sorbent Chemicals*

**Distributor
Contact Informations**